

SAMPSON COUNTY 911 & ES FACILITIES

CLINTON, NORTH CAROLINA

CMU DETAILS

DATE: 12.04.2020
PROJECT NO: 20003

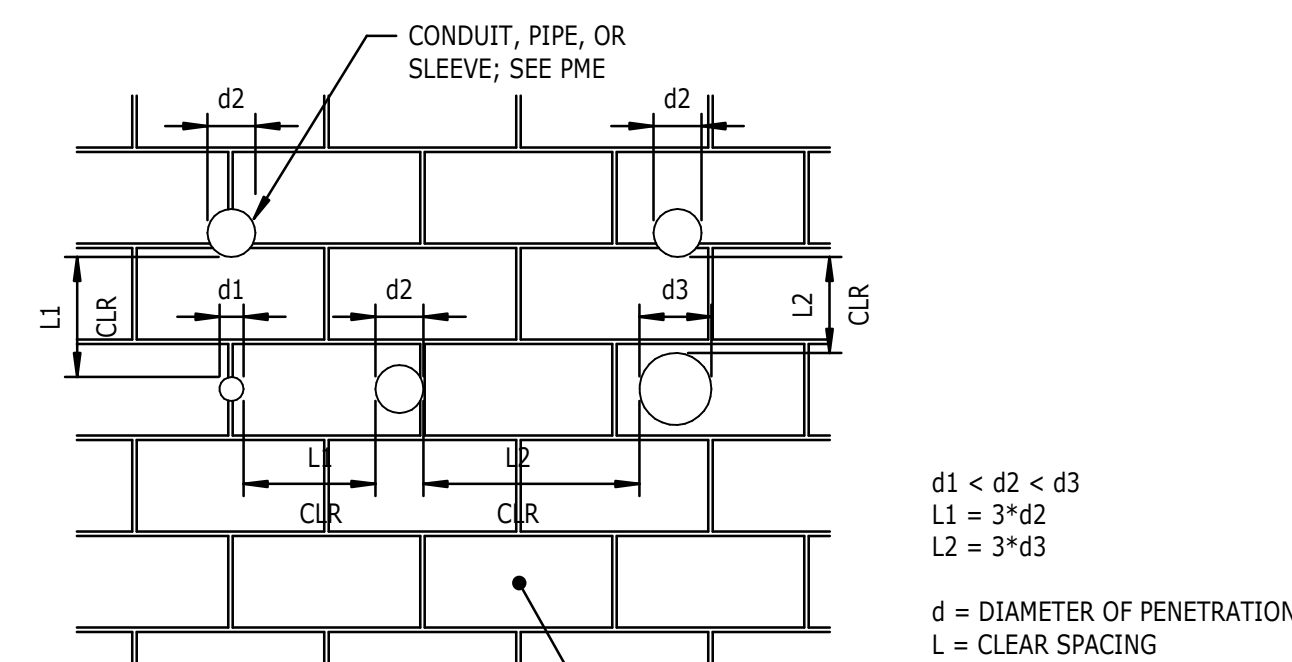
REVISIONS
NO: DATE: DESCRIPTION:

THIS DRAWING IS THE PROPERTY OF ADW ARCHITECTS, P.A. AND SHALL NOT BE REPRODUCED OR COPIED IN WHOLE OR PART. IT SHALL NOT BE USED ON ANY OTHER PROJECT OR GIVEN TO ANY OTHER COMPANY OR AGENCY WITHOUT THE CONSENT OF ADW ARCHITECTS, P.A.

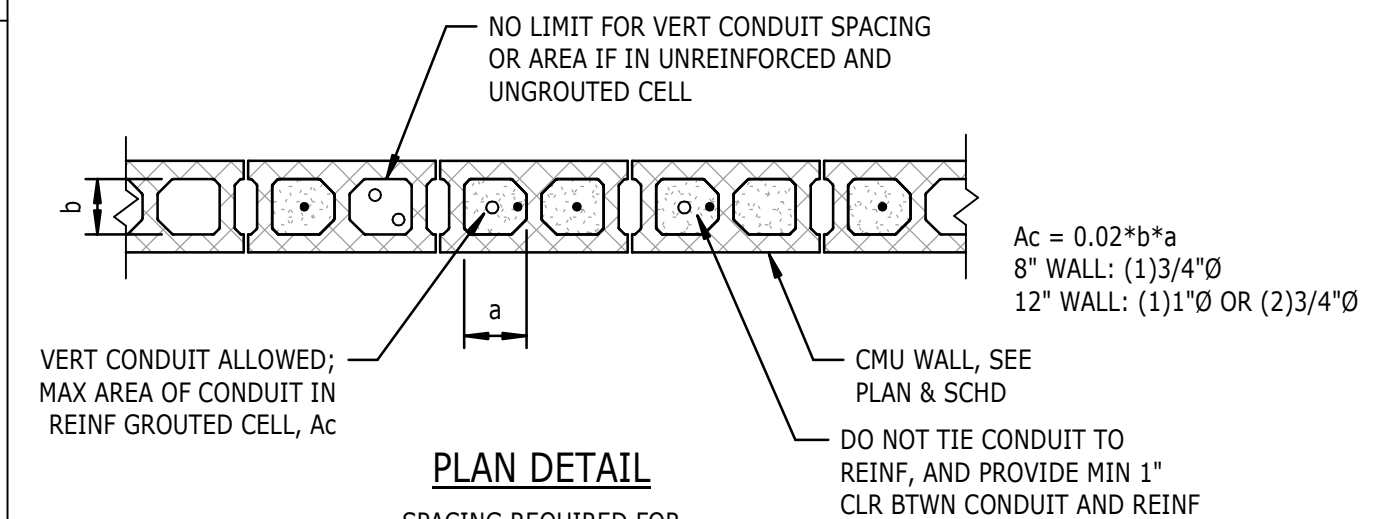


SHEET NUMBER

S402



ELEVATION
SPACING REQUIRED FOR UTILITY PENETRATION

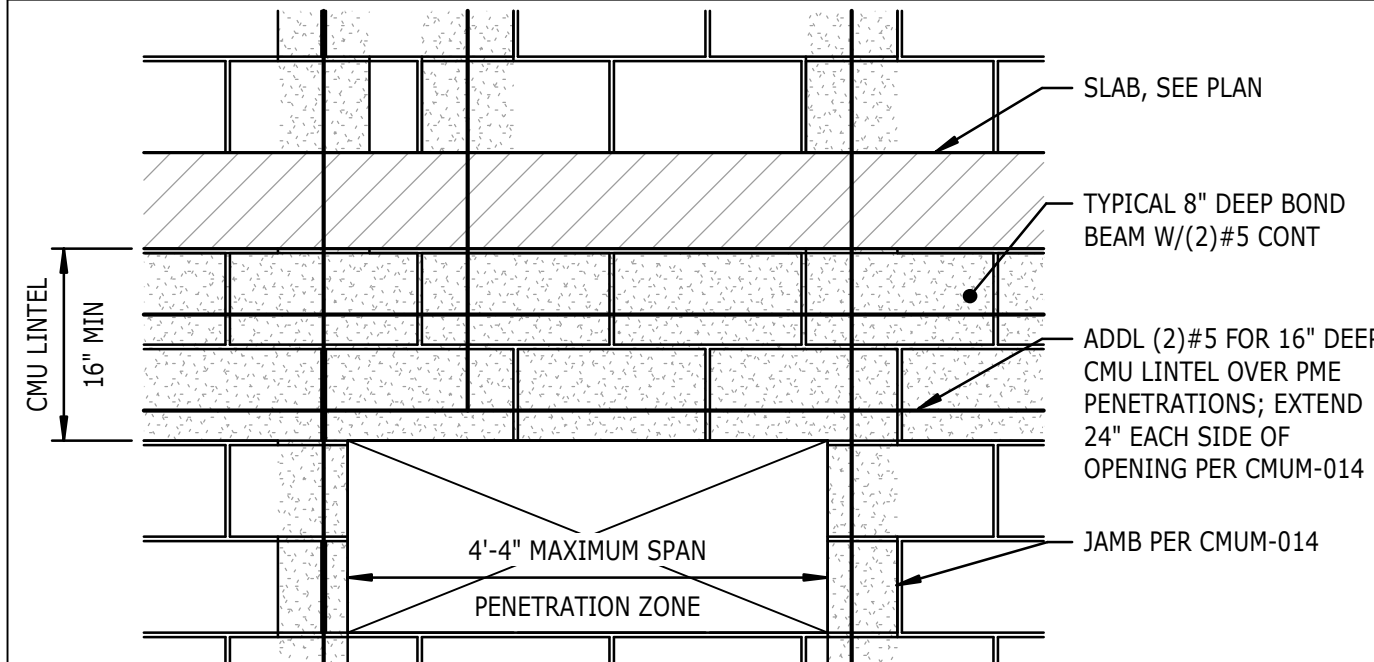


PLAN DETAIL
SPACING REQUIRED FOR UTILITY PENETRATION

- NOTES:
1. REFER TO PME DRAWINGS FOR ALL TELECOM, CONDUIT, AND PIPES 8"Ø AND SMALLER. CONTRACTOR TO FOLLOW DETAIL SPACING REQUIREMENTS FOR LAYOUT. IF SPACING CANNOT BE MAINTAINED, PENETRATIONS MUST BE GROUPED BELOW CMU LINTEL. SEE ADDITIONAL TYPICAL DETAILS.
 2. CONDUITS SHALL NOT PENETRATE BOND BEAMS NOR LINTELS.
 3. PIPES WITH LIQUID, GAS, OR VAPORS HIGHER THAN 150°F ARE NOT PERMITTED VERTICALLY WITHIN WALLS.
 4. PIPES WITH PRESSURE IN EXCESS OF 55 PSI ARE NOT PERMITTED VERTICALLY WITHIN WALLS.
 5. PIPES WITH WATER OR LIQUID SUBJECT TO FREEZING ARE NOT PERMITTED VERTICALLY WITHIN WALLS.

1
S402 3/4" = 1'-0"

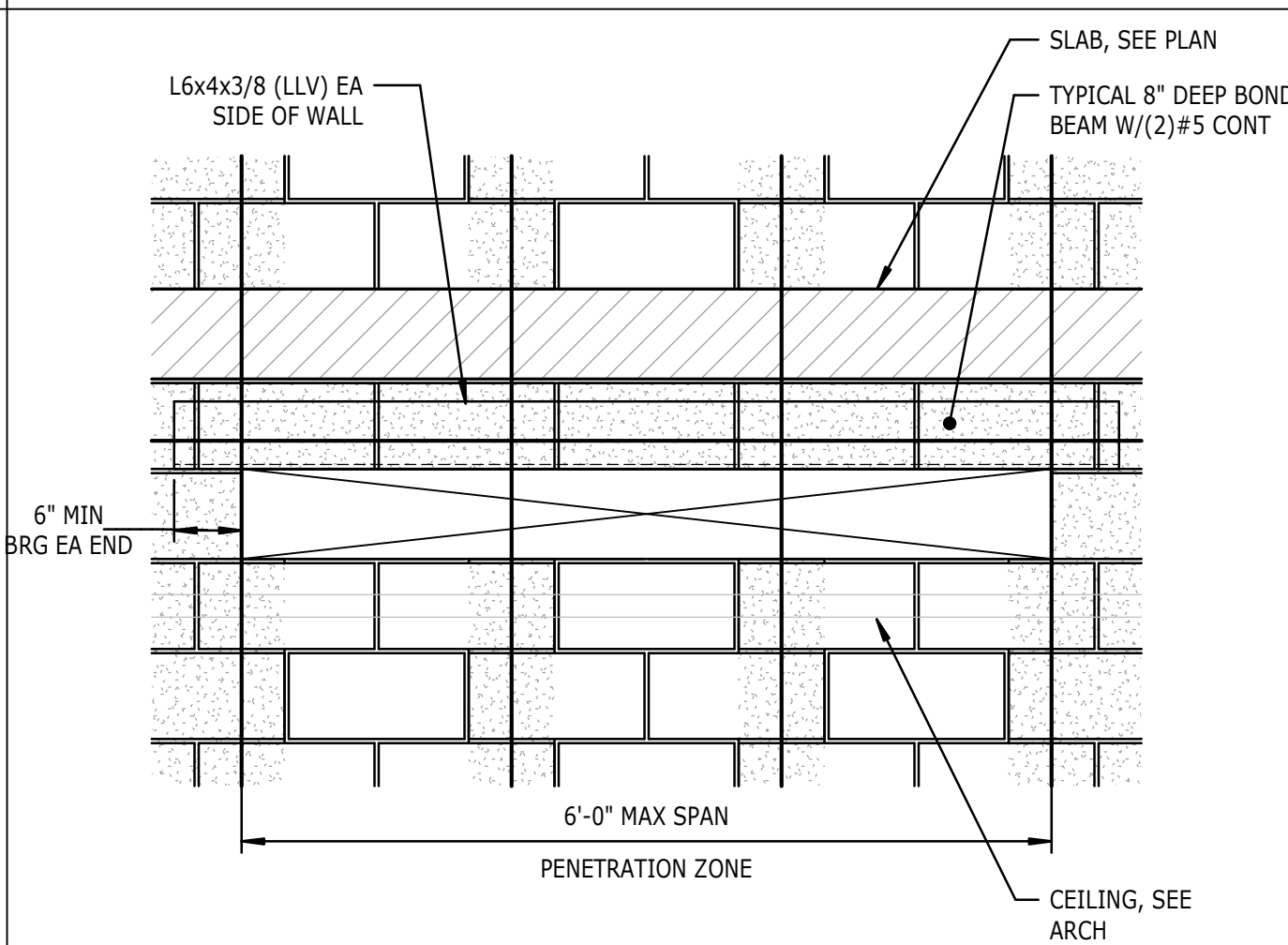
ALLOWABLE WALL CONDUIT PENETRATIONS



- NOTES:
1. REFER TO PME DRAWINGS FOR ALL OPENING SIZES AND LOCATIONS.
 2. CONTRACTOR TO COORDINATE ALL OPENINGS SMALLER THAN 8"x8" (OR 8"Ø) PER CMUM-023. IF SPACING CANNOT BE MAINTAINED, PENETRATIONS MUST BE GROUPED BELOW CMU LINTEL SHOWN HEREIN.
 3. OPENINGS OR GROUPED PENETRATIONS LESS THAN 1'-10" WIDE CAN BE LOCATED BELOW THE TYPICAL 8" BOND BEAM SHOWN HEREIN. PROVIDE REINFORCEMENT WITHIN 16" OF OPENING ON ALL SIDES PER CMUM-014 AND MAINTAIN 24" MINIMUM BETWEEN OPENINGS.
 4. OPENINGS OR GROUPED PENETRATIONS 1'-10" TO 4'-4" WIDE SHALL FOLLOW THIS DETAIL. PROVIDE REINFORCEMENT WITHIN 16" OF OPENING ON ALL SIDES PER CMUM-014 AND MAINTAIN 24" MINIMUM BETWEEN OPENINGS.
 5. CONTRACTOR TO VERIFY LINTEL DEPTH AND MAXIMUM OPENING HEIGHT WITH CEILING ELEVATION (SEE ARCHITECTURAL DRAWINGS). WHERE CMU LINTEL DEPTH CANNOT BE MAINTAINED, PROVIDE STEEL DOUBLE ANGLE LINTEL PER CMUM-025.

3
S402 3/4" = 1'-0"

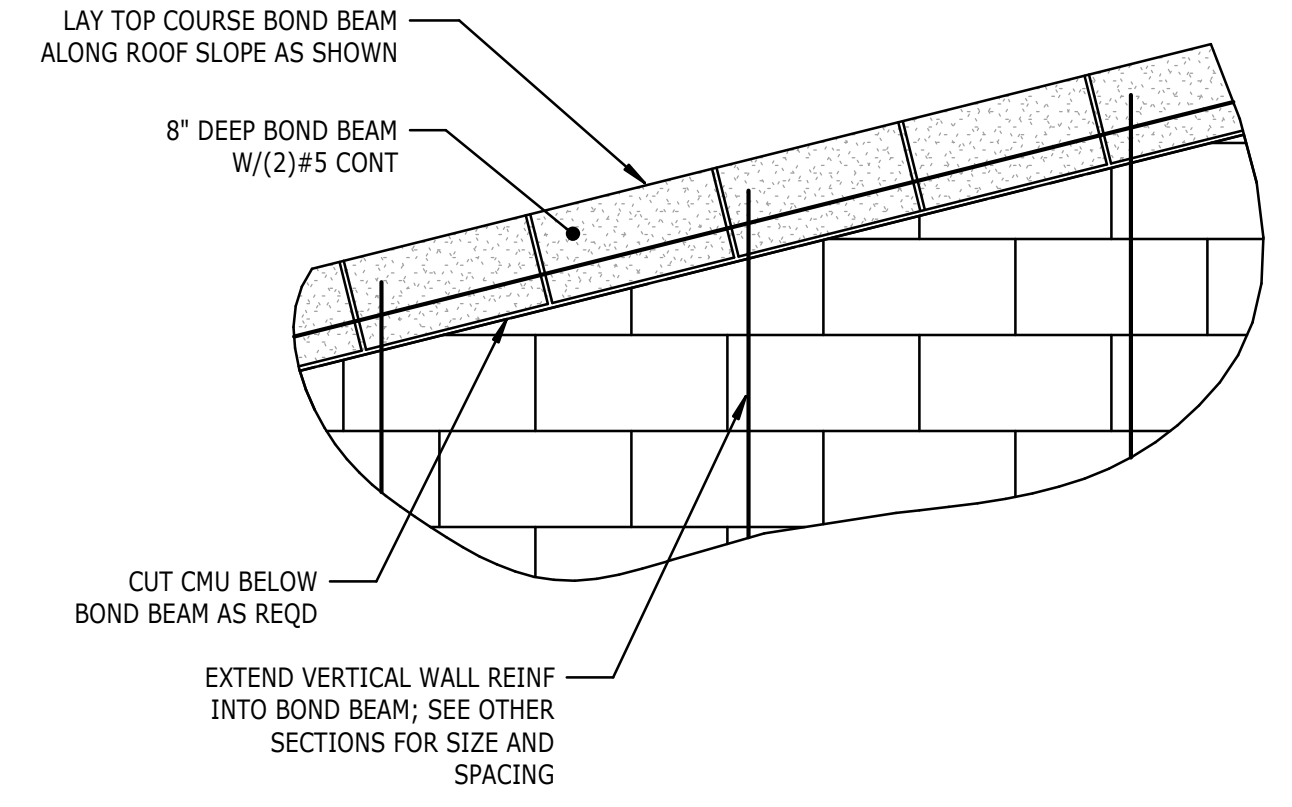
TYPICAL PENETRATIONS IN BEARING WALLS



- NOTES:
1. REFER TO PME DRAWINGS FOR ALL OPENING SIZES AND LOCATIONS.
 2. CONTRACTOR TO PROVIDE STEEL DOUBLE ANGLE LINTEL AS SHOWN HEREIN WHERE REQUIRED FOR PME COORDINATION WITH CEILING ELEVATION (SEE ARCHITECTURAL DRAWINGS) AND FOR OPENINGS WIDER THAN 4'-4" (NOT TO EXCEED 6'-0").

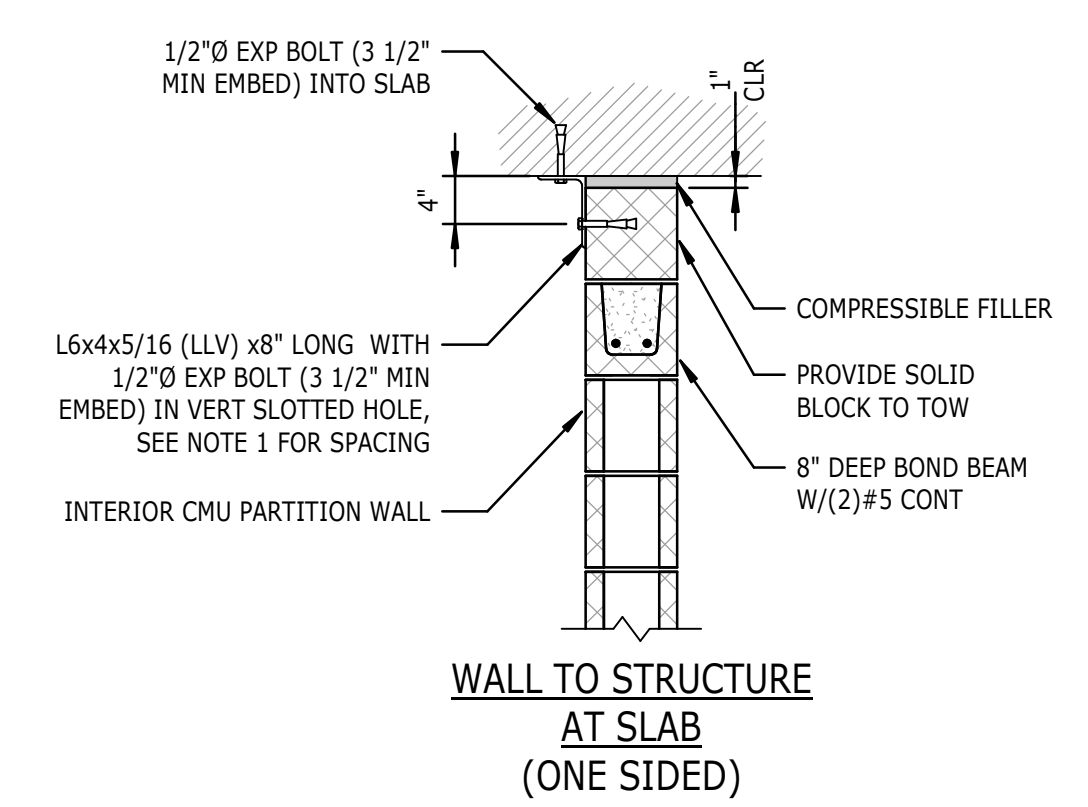
4
S402 3/4" = 1'-0"

TYPICAL PENETRATIONS IN BEARING WALLS

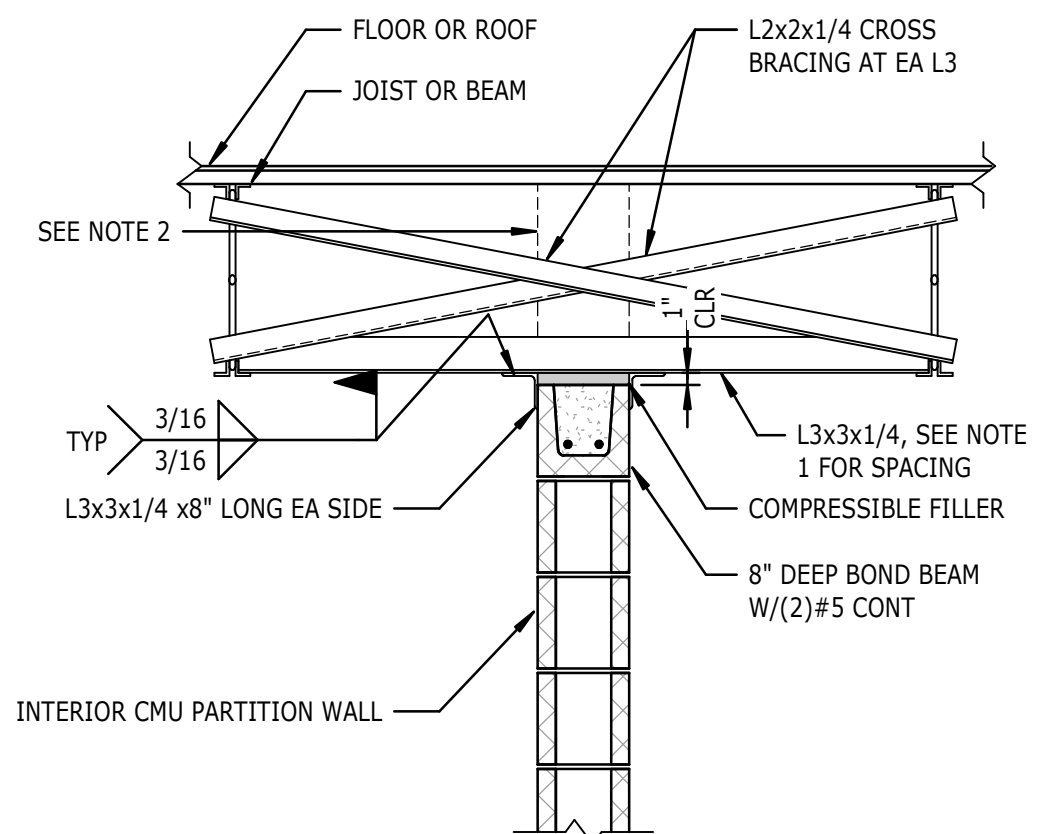


9
S402 3/4" = 1'-0"

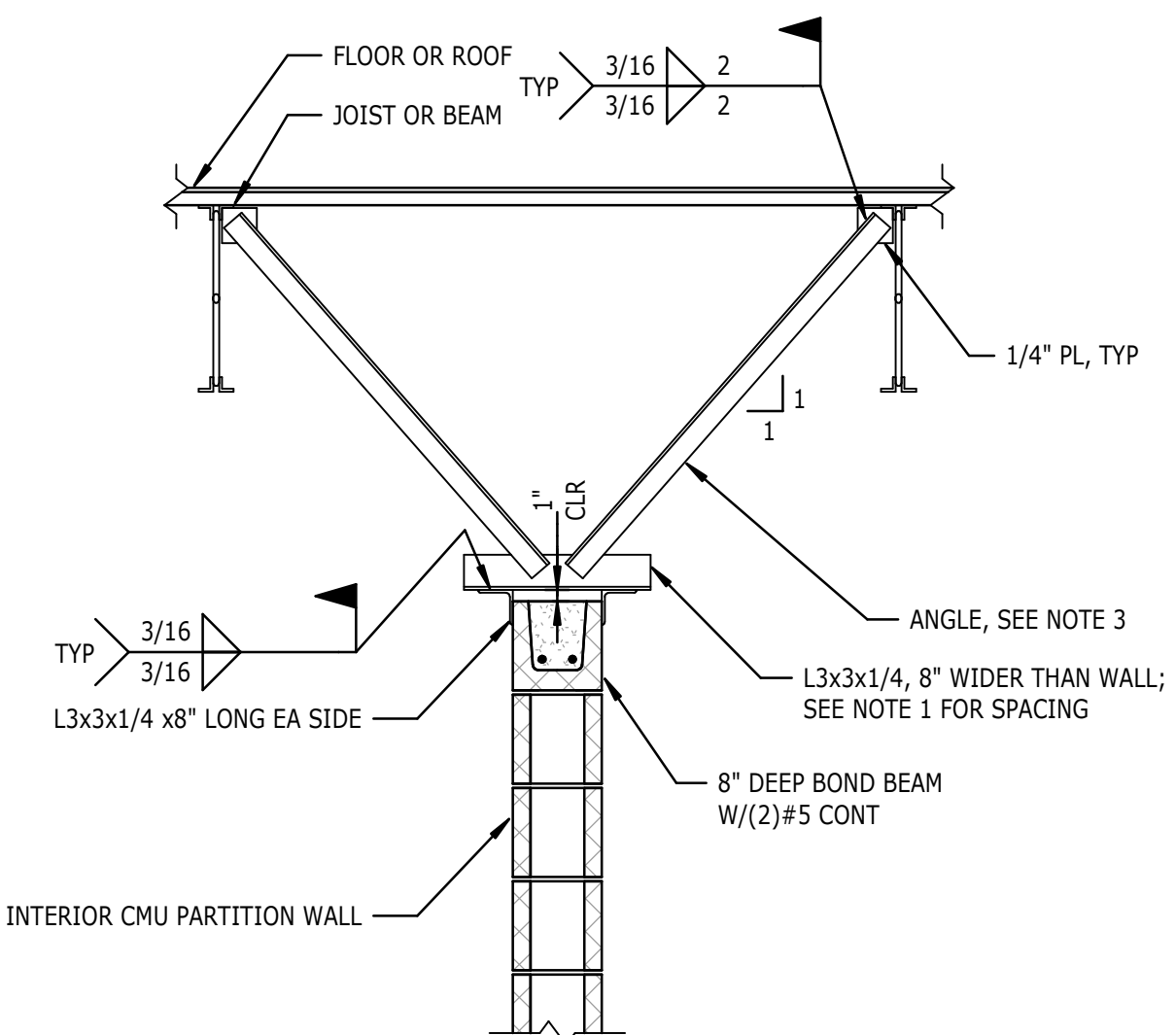
TYPICAL SLOPED BOND BEAM



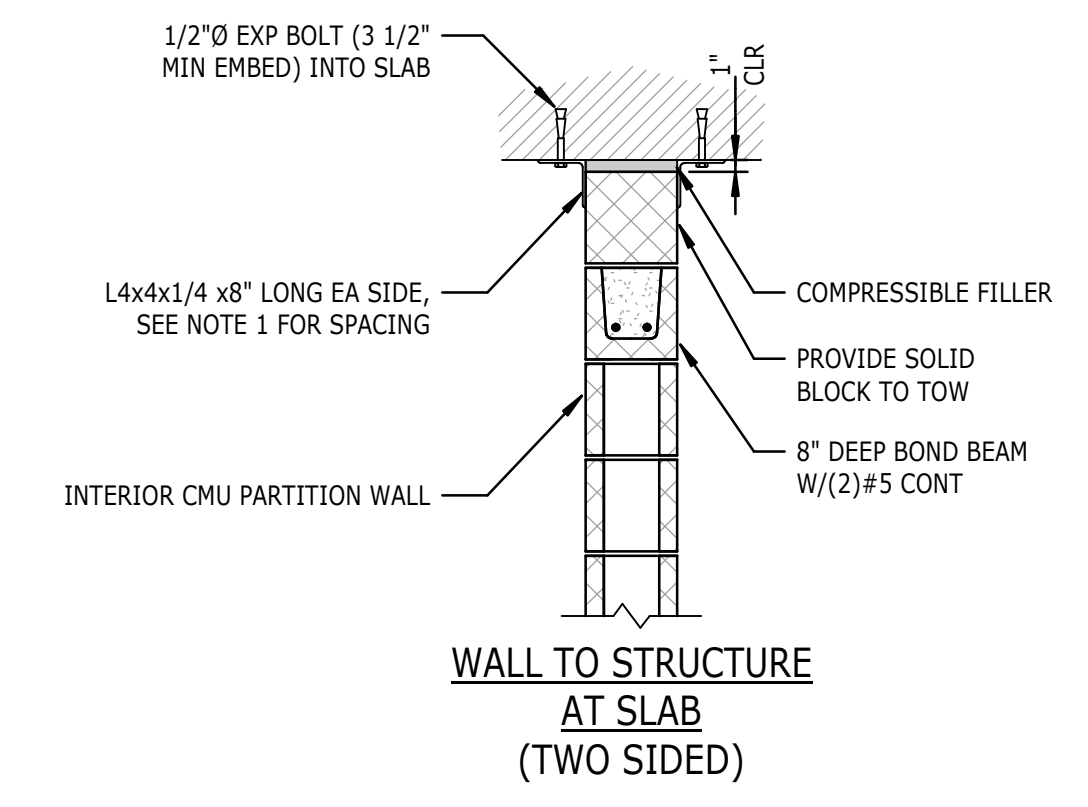
WALL TO STRUCTURE AT SLAB (ONE SIDED)



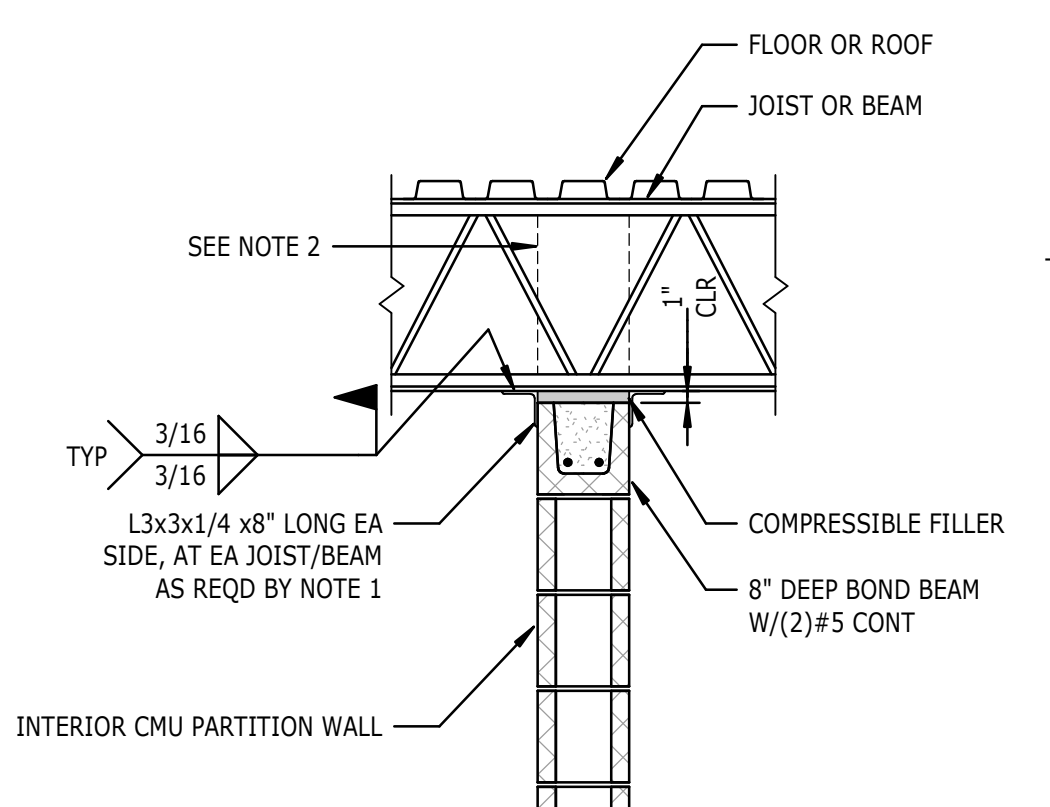
WALL TO STRUCTURE PARALLEL TO WALL



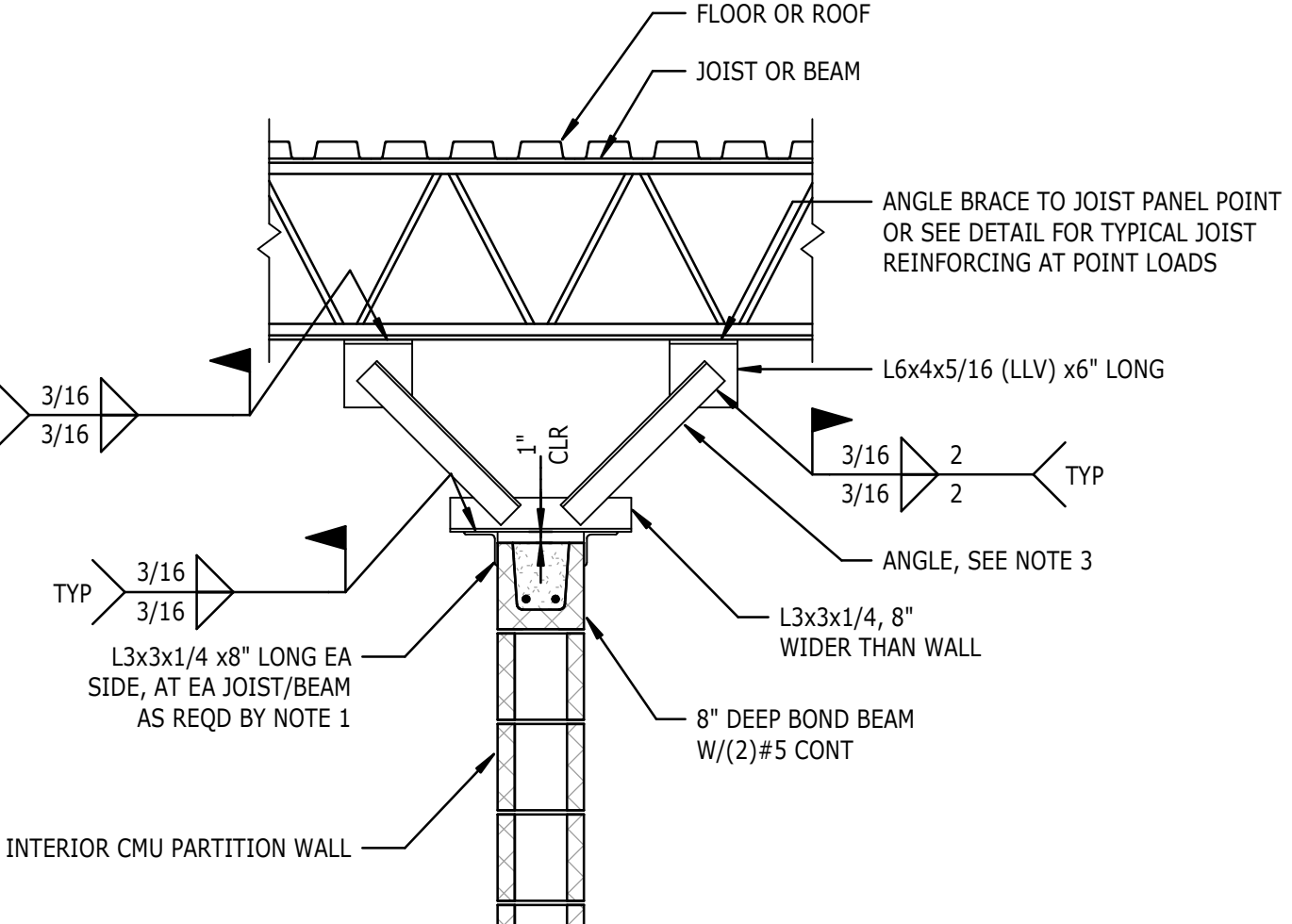
WALL BELOW STRUCTURE PARALLEL TO WALL



WALL TO STRUCTURE AT SLAB (TWO SIDED)



WALL TO STRUCTURE PERPENDICULAR TO WALL

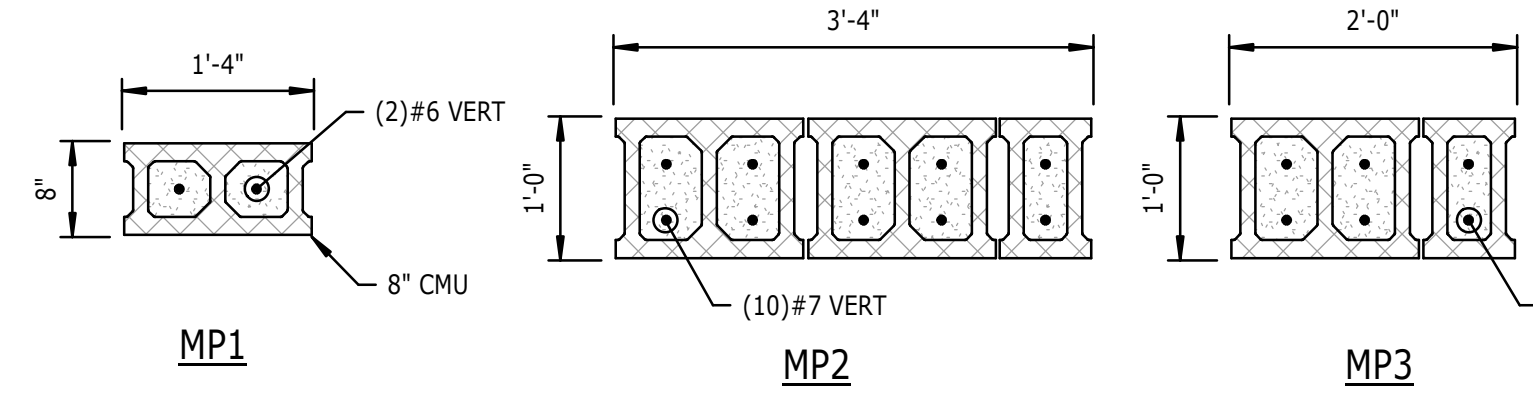


WALL BELOW STRUCTURE PERPENDICULAR TO WALL

- NOTES:
1. TOPS OF ALL INTERIOR PARTITION WALLS SHALL BE BRACED PER THIS DETAIL AT A SPACING NOT TO EXCEED 24'-0" FOR 8" CMU OR LARGER, 18'-0" FOR 6" CMU, AND 12'-0" FOR 4" CMU. INTERSECTING WALLS BUILT WITH INTERLOCKING BLOCKS OR DETAILED PER THE TYPICAL INTERSECTION AT NON-LOAD BEARING WALLS DETAIL (NOT EXCEEDING THE SPACING NOTED) MAY ALSO BE CONSIDERED TO BRACE THE PARTITION.
 2. SEE ARCHITECTURAL DRAWINGS FOR TOP OF WALL ELEVATIONS.
 3. USE L2x2x1/4 FOR LENGTHS LESS THAN 6'-0", L3x3x1/4 FOR LENGTHS UP TO 9'-0", AND L4x4x1/4 FOR LENGTHS UP TO 12'-0".

6
S402 3/4" = 1'-0"

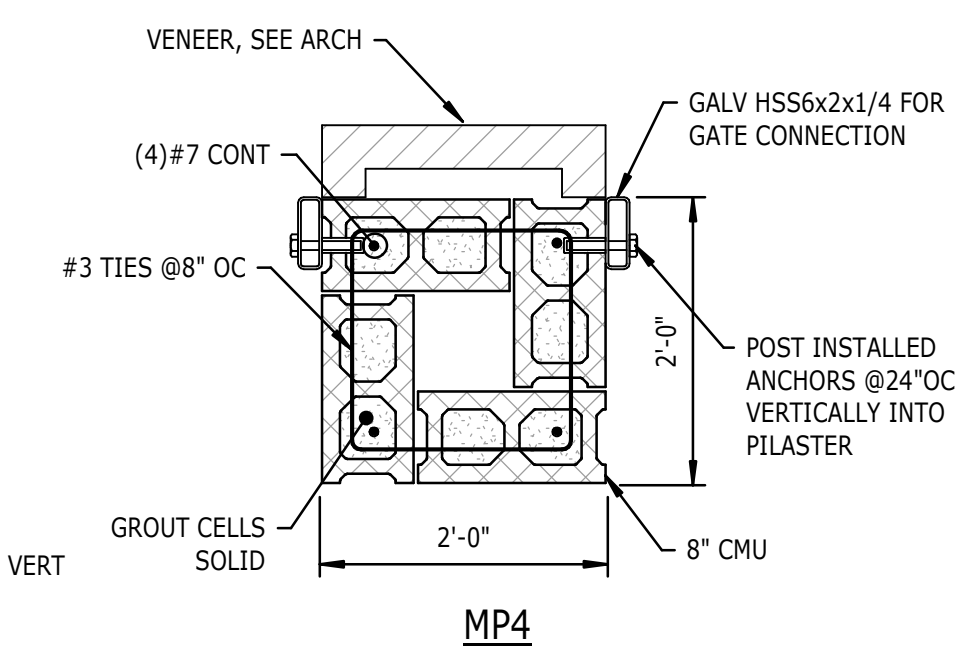
TYPICAL INTERIOR PARTITION BRACING



- NOTES:
1. ALL DIMENSIONS SHOWN ARE NOMINAL DIMENSIONS.
 2. SEE MINIMUM SPLICE AND EMBEDMENT LENGTH SCHEDULE FOR LAP REQUIREMENTS.
 3. GROUT CELLS SOLID.

8
S402 3/4" = 1'-0"

TYPICAL MASONRY PILASTERS



4
S402 3/4" = 1'-0"

TYPICAL PENETRATIONS IN BEARING WALLS